



CLINICAL  
EXCELLENCE  
COMMISSION

# Medication Priorities

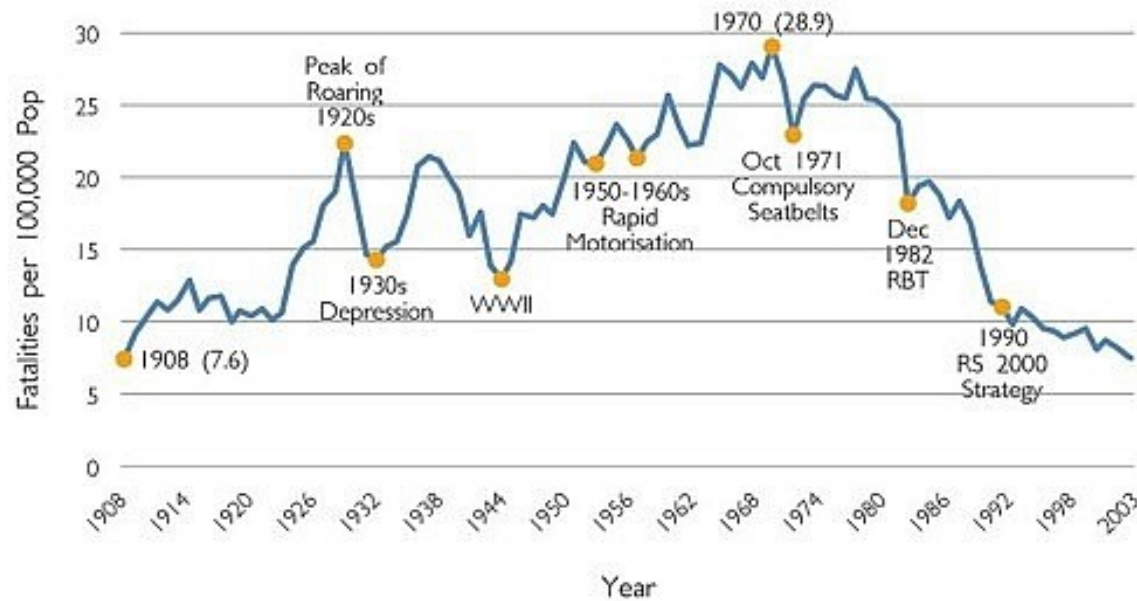
Prof CF Hughes

Sydney  
22nd June 2007



CLINICAL  
EXCELLENCE  
COMMISSION

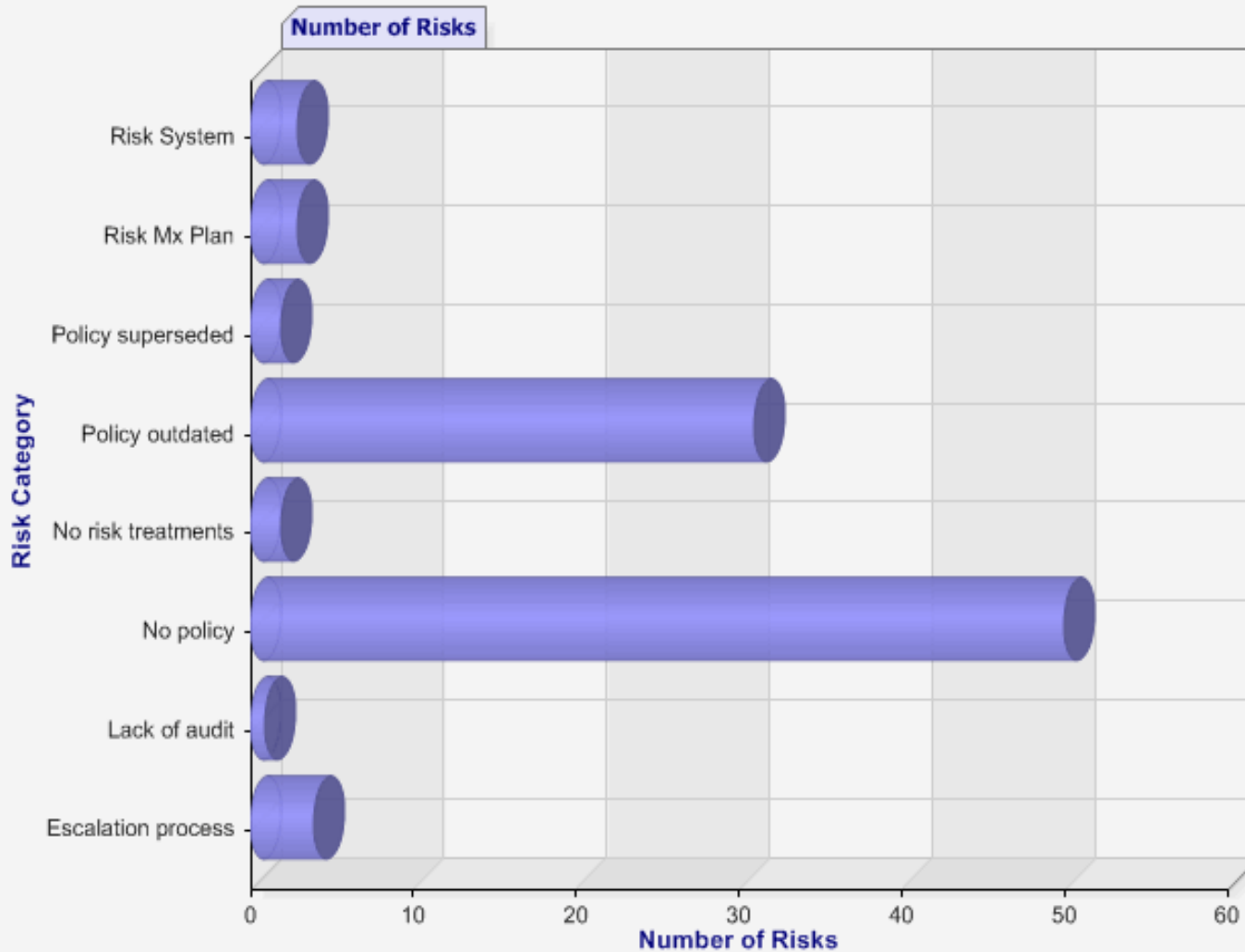
# NSW MVA Statistics



# Risks in Policies



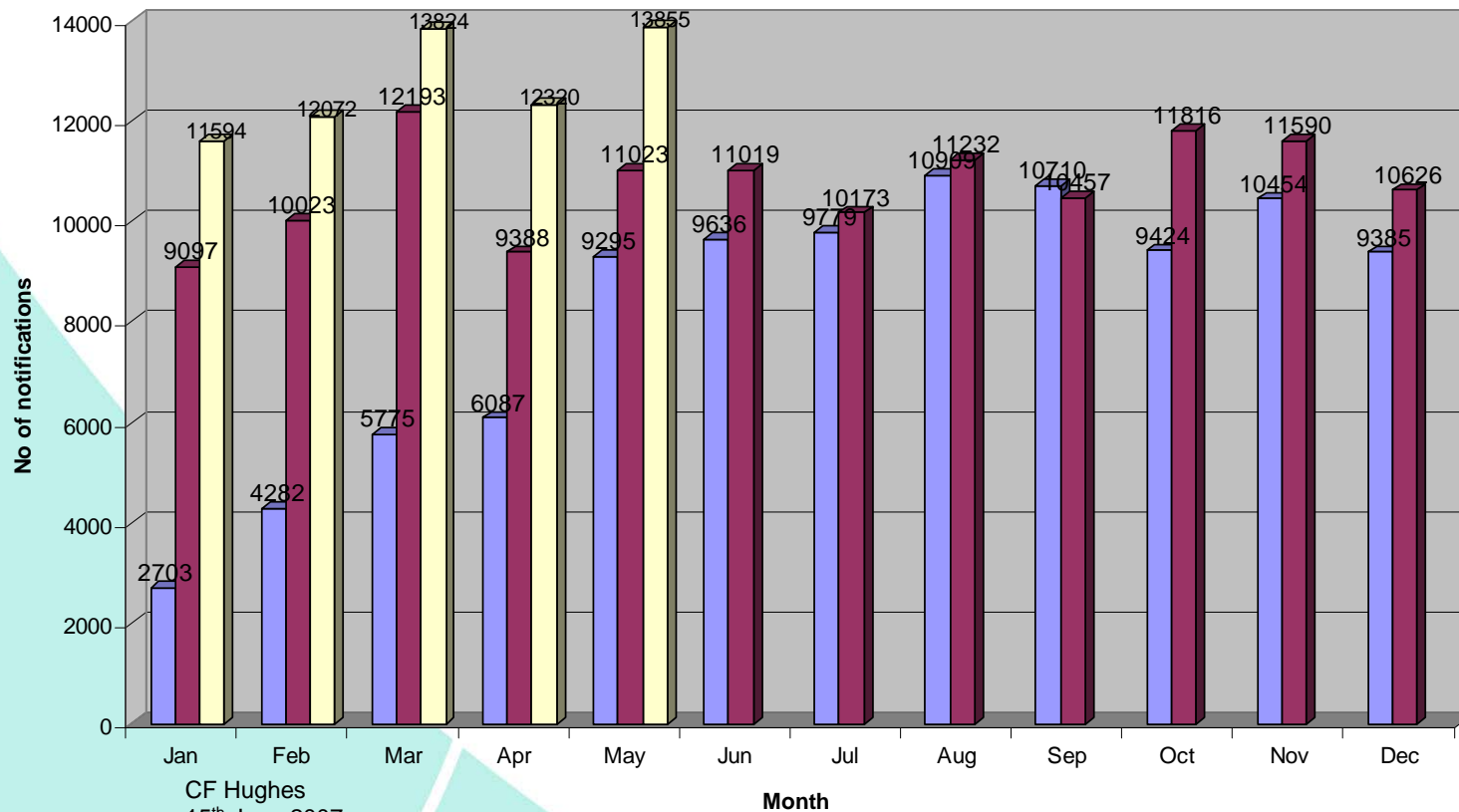
CLINICAL  
EXCELLENCE  
COMMISSION



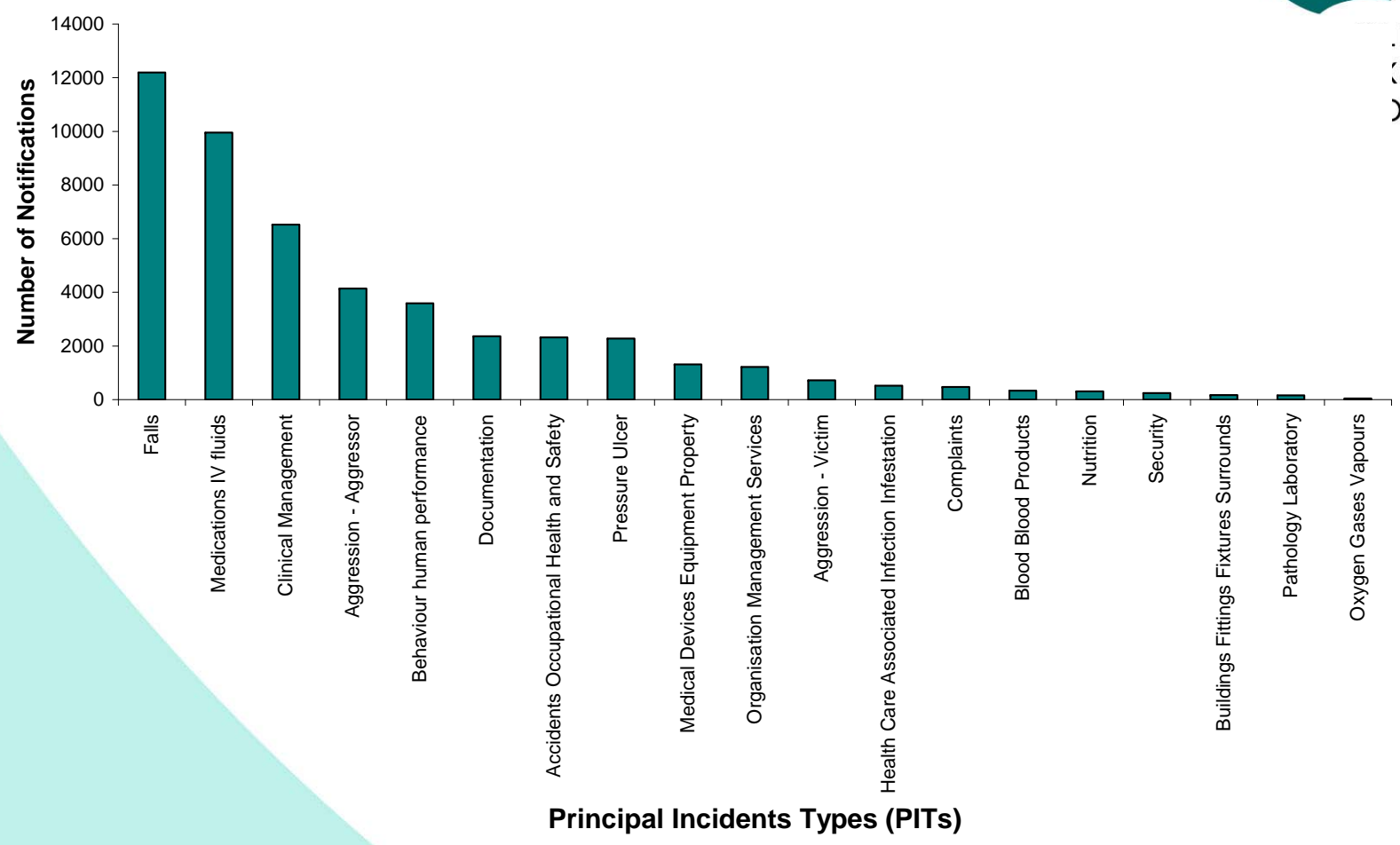


## NSW Trend IIMS Notifications 2005/2006/2007

■ 2005 ■ 2006 ■ 2007

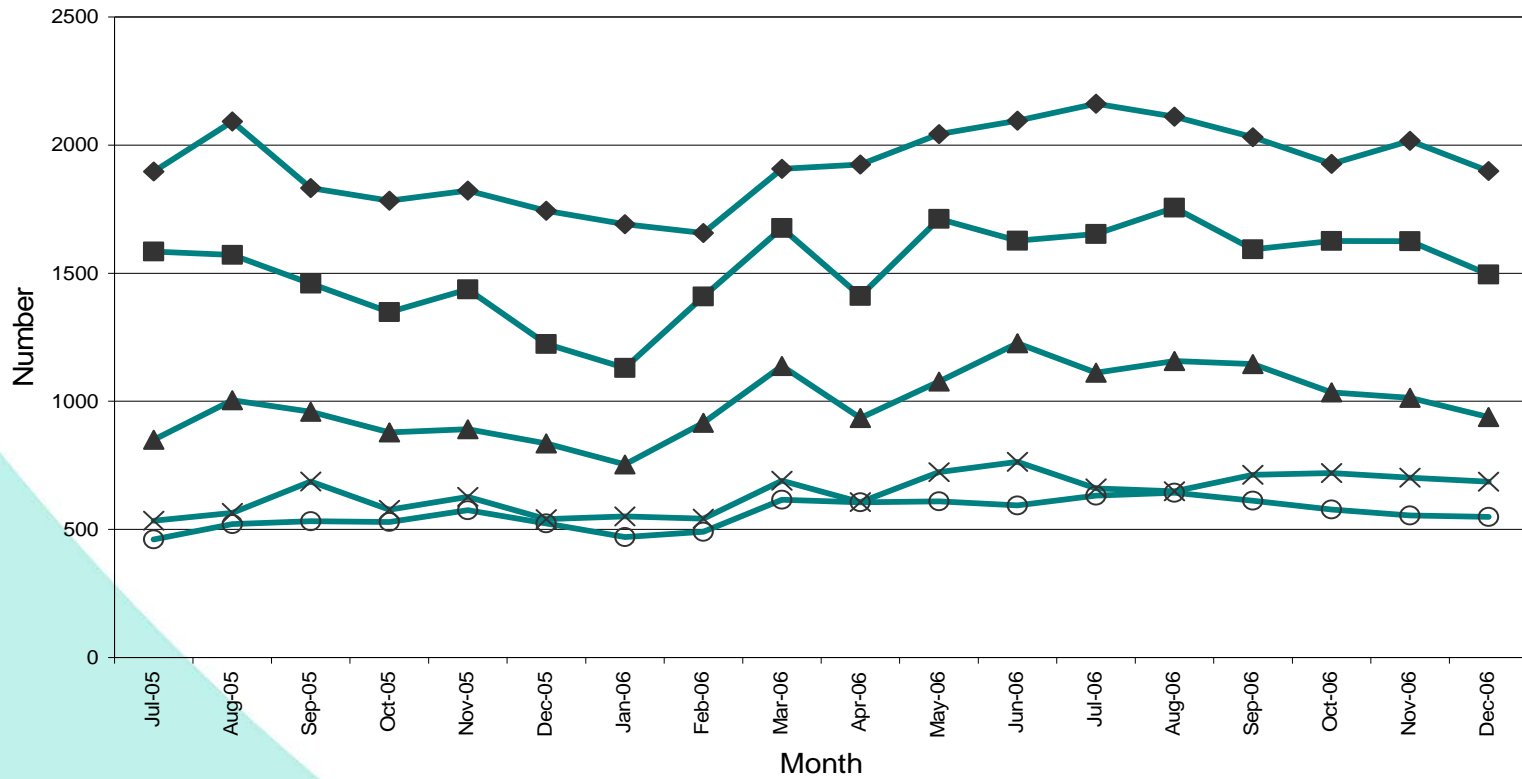


CF Hughes  
15<sup>th</sup> June 2007





CLINICAL  
EXCELLENCE  
COMMISSION

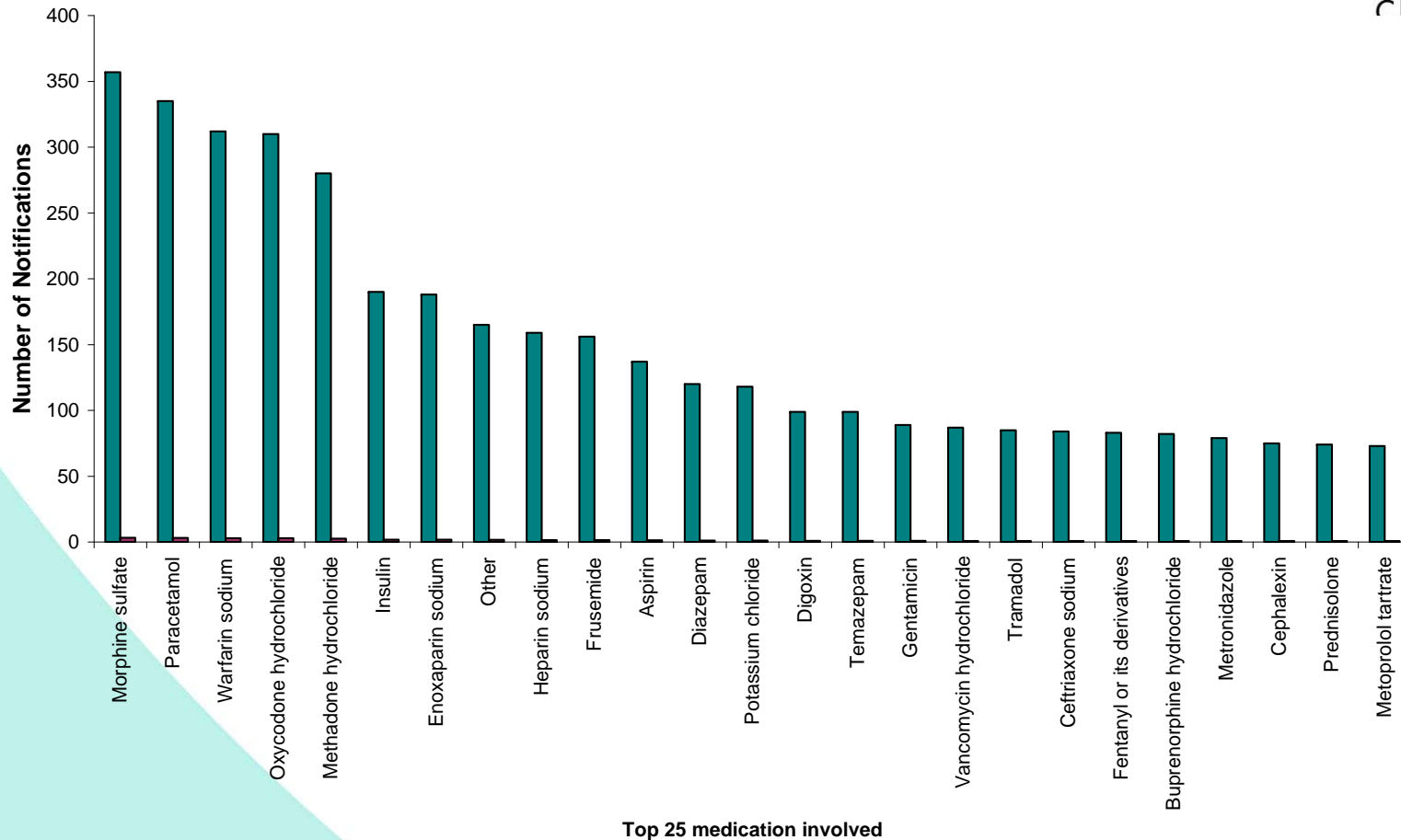


CF Hugnes  
15<sup>th</sup> June 2007



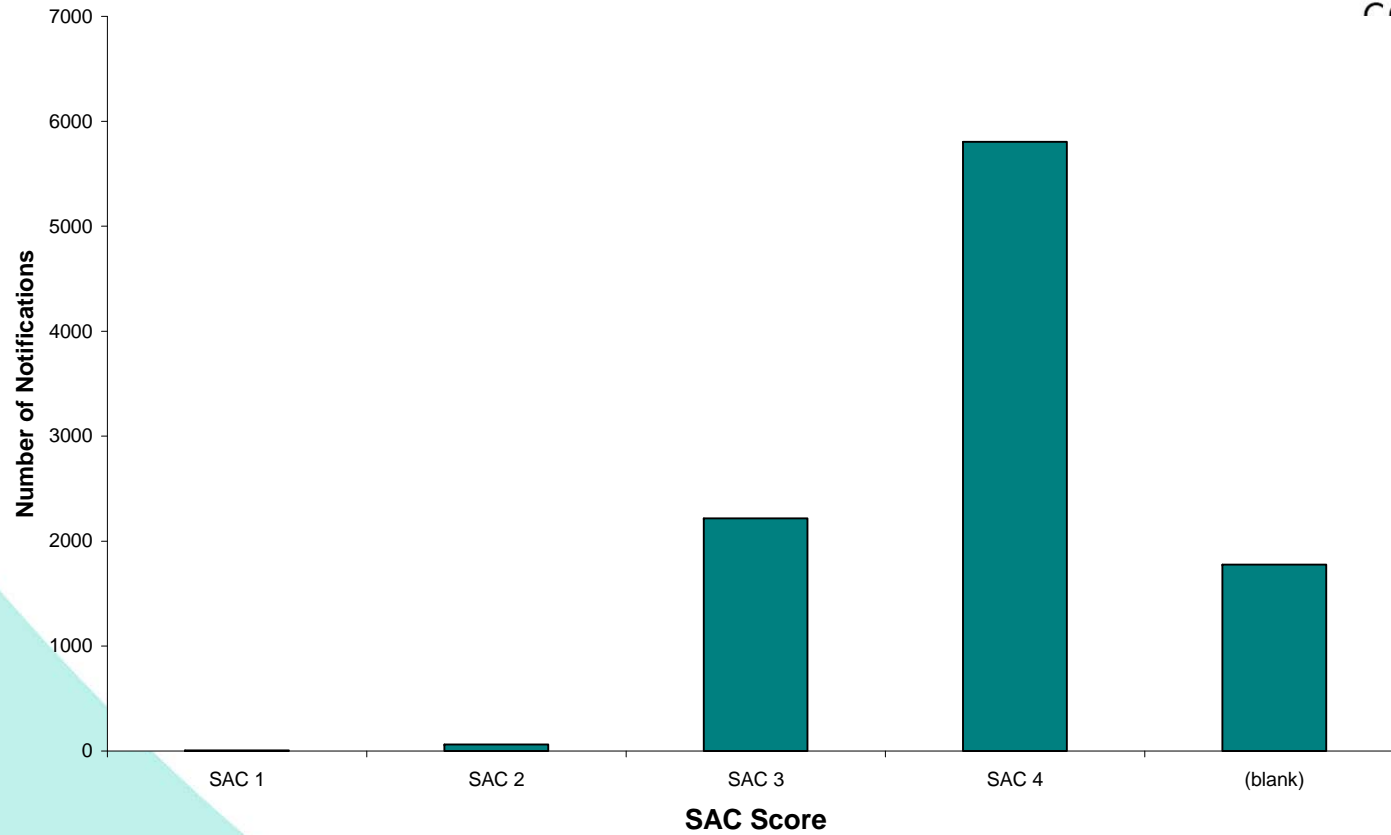


CLINICAL  
EXCELLENCE  
COMMISSION

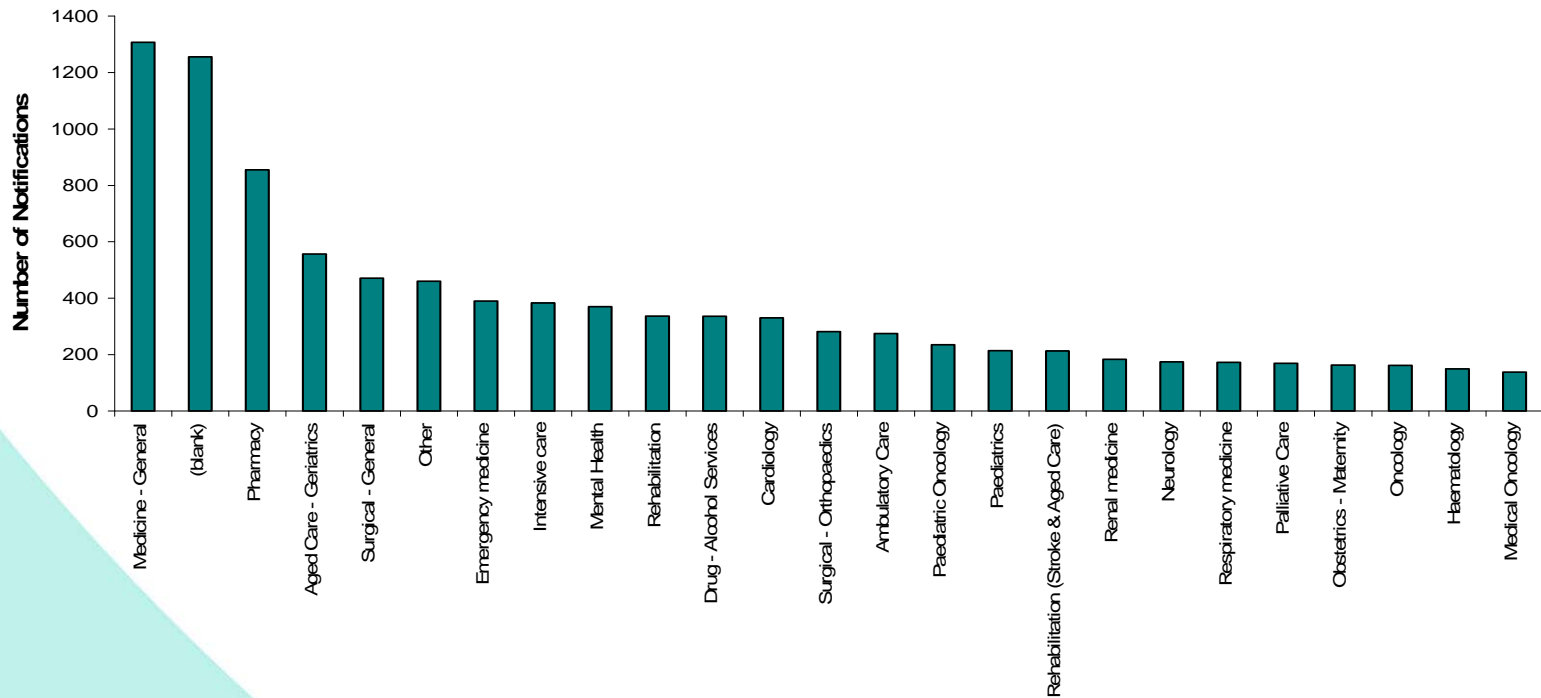




CLINICAL  
EXCELLENCE  
COMMISSION



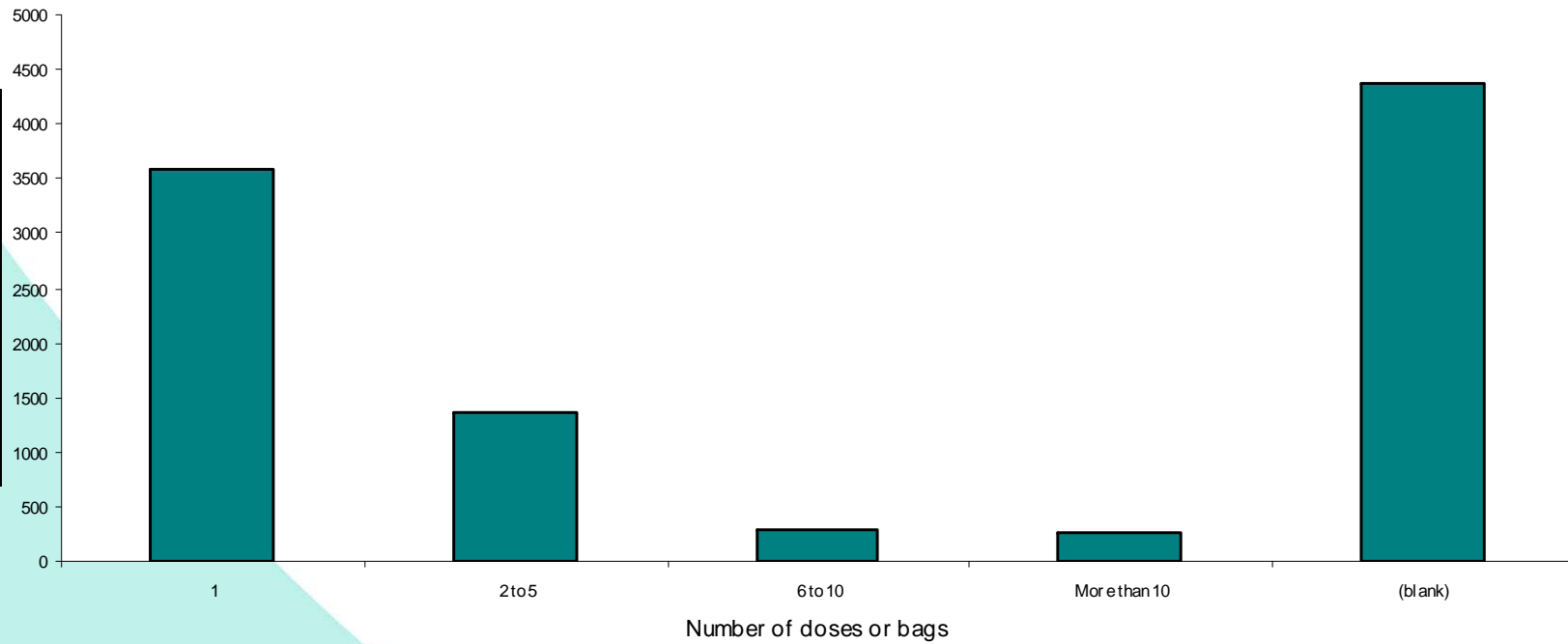
CF Hughes  
15<sup>th</sup> June 2007



**Top 25 Specific Services**



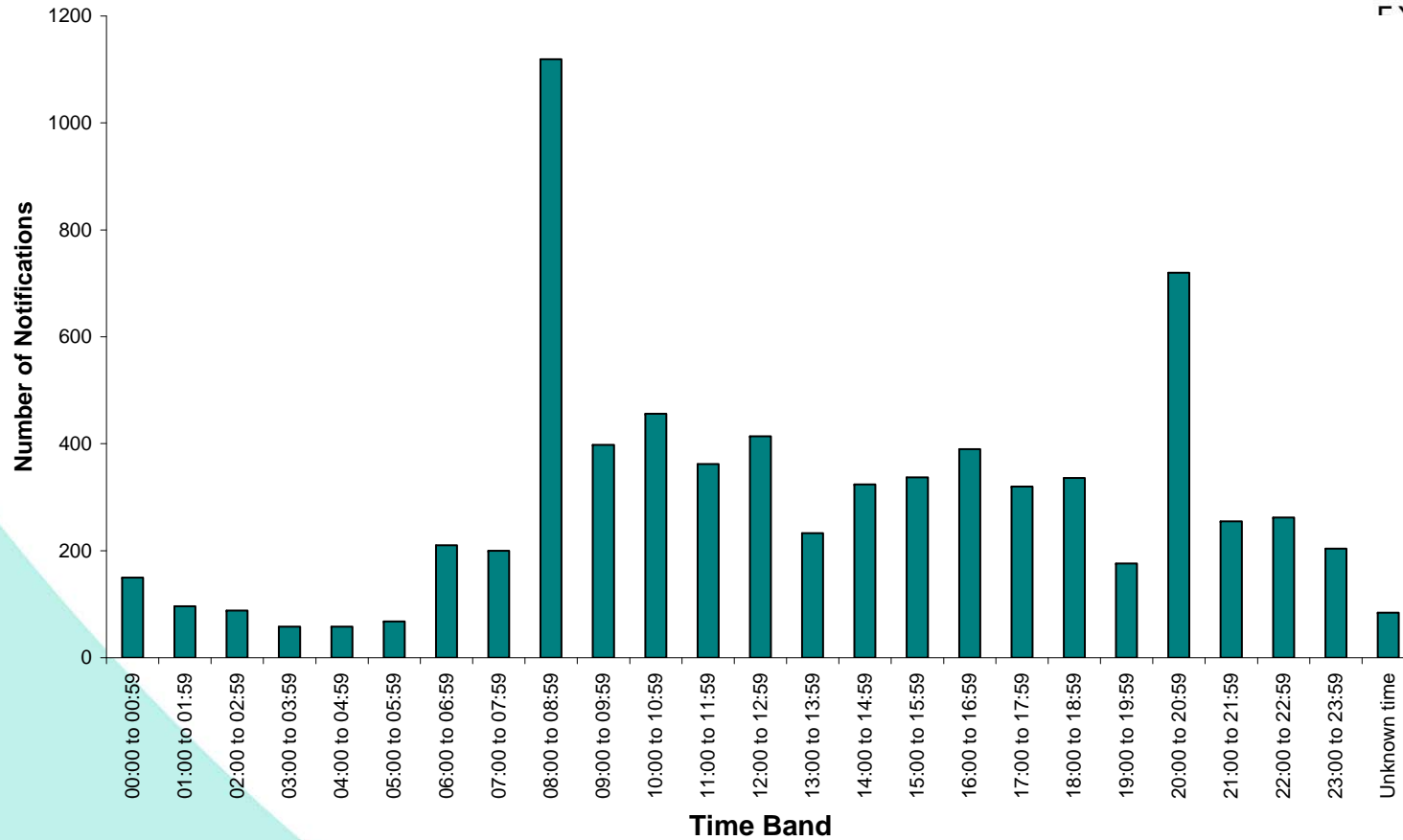
CLINICAL  
EXCELLENCE  
COMMISSION



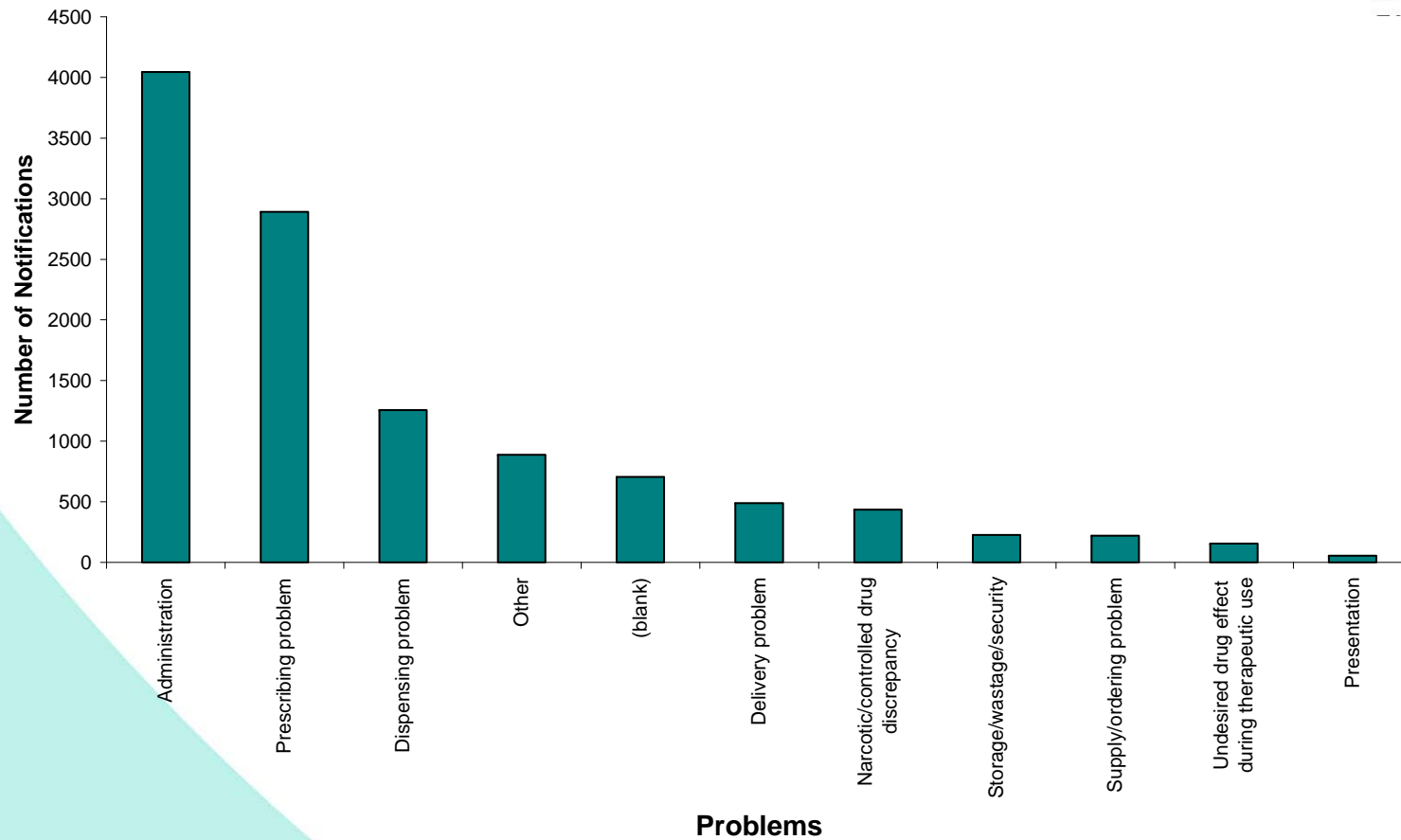
CF Hughes  
15<sup>th</sup> June 2007



CLINICAL  
EXCELLENCE  
COMMISSION



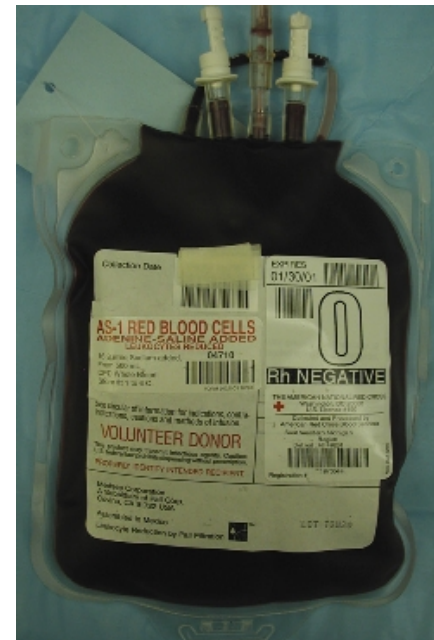
CF Hughes  
15<sup>th</sup> June 2007





CLINICAL  
EXCELLENCE  
COMMISSION

# Blood Transfusion Improvement Collaborative





CLINICAL  
EXCELLENCE  
COMMISSION

# Staff based solutions

## **BLOOD TRANSFUSION CHECKLIST**

Reason for transfusion:

Hb..... g/L

Associated symptoms:

- chest pain
- dyspnoea
- fatigue
- dizziness/hypotension
- other .....

Number of units requested: .....

Documented informed patient consent:

yes / no

MD name ..... pager:.....

signature .....

date / /

### ***NHMRC / ASBT Guidelines***

< 70 g/L – usually indicated

70 – 100 g/L – if clinical symptoms

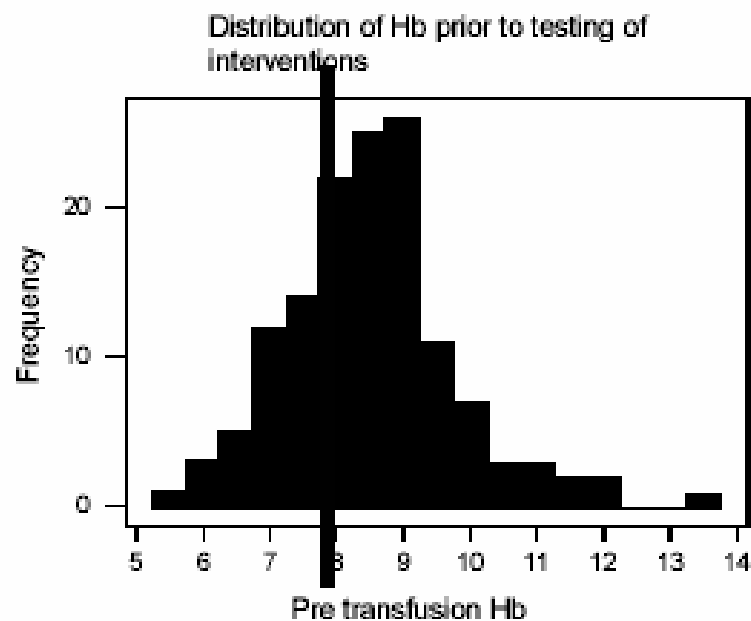
≥ 100 g/L – usually not indicated

**If in doubt, consult a haematologist.**



CLINICAL  
EXCELLENCE  
COMMISSION

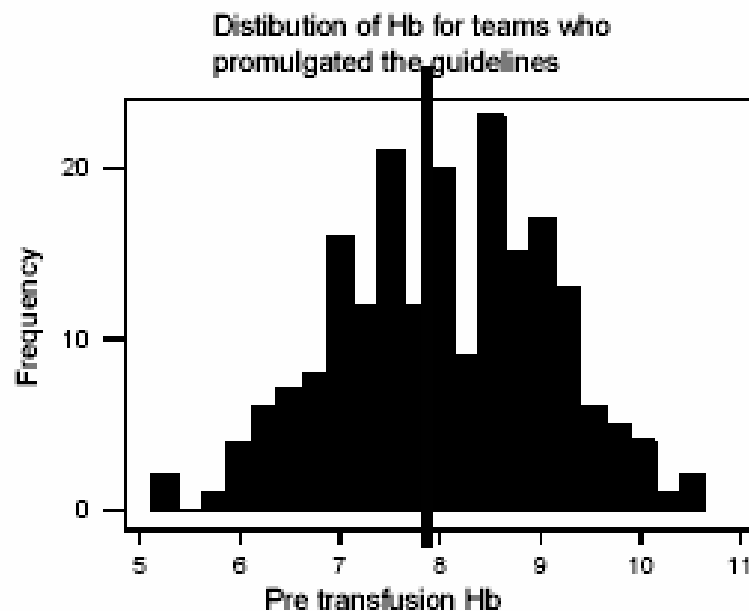
**Figure 3** Distributions of pre transfusion haemoglobins for the pre intervention group





CLINICAL  
EXCELLENCE  
COMMISSION

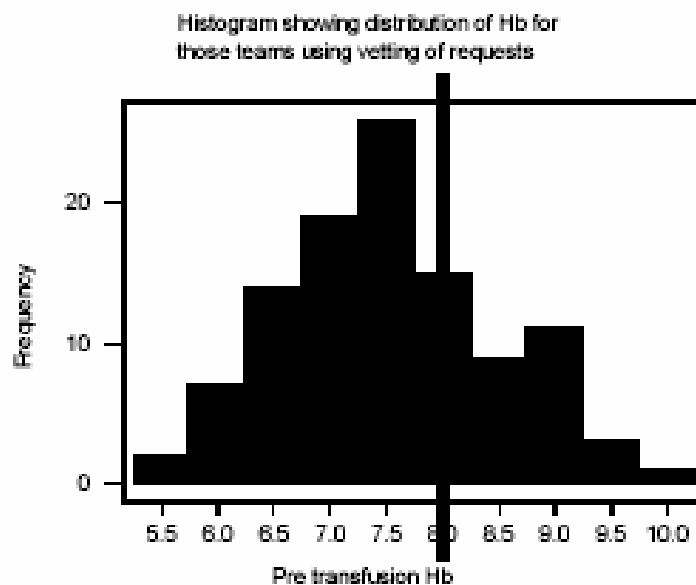
**Figure 4** Distribution of pre transfusion haemoglobins following promulgation of guidelines and education of clinical staff





CLINICAL  
EXCELLENCE  
COMMISSION

**Figure 5** Distribution of pre transfusion haemoglobins following promulgation of guidelines and education of clinical staff and introduction of vetting of requests

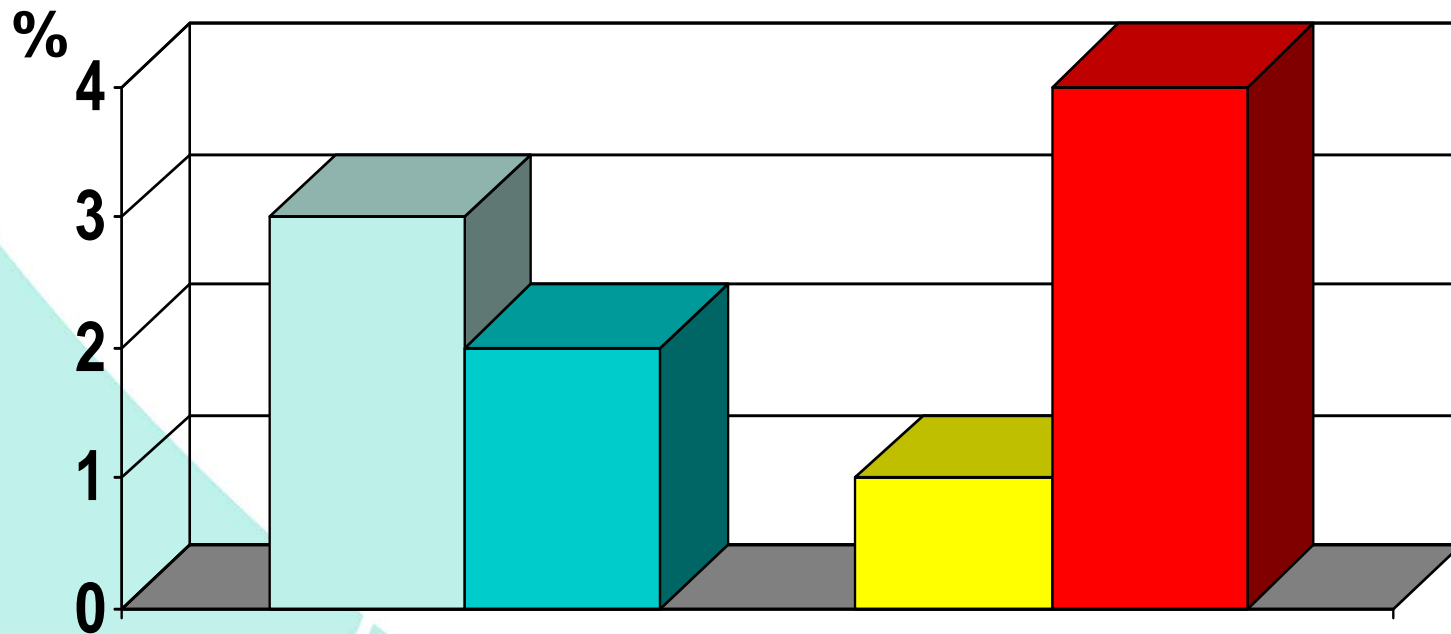




# Asthma re-representation rate



■ Baseline ■ Post Imp ■ With Plan ■ Without Plan



CF Hughes  
15<sup>th</sup> June 2007

Representation

$p = 0.01$